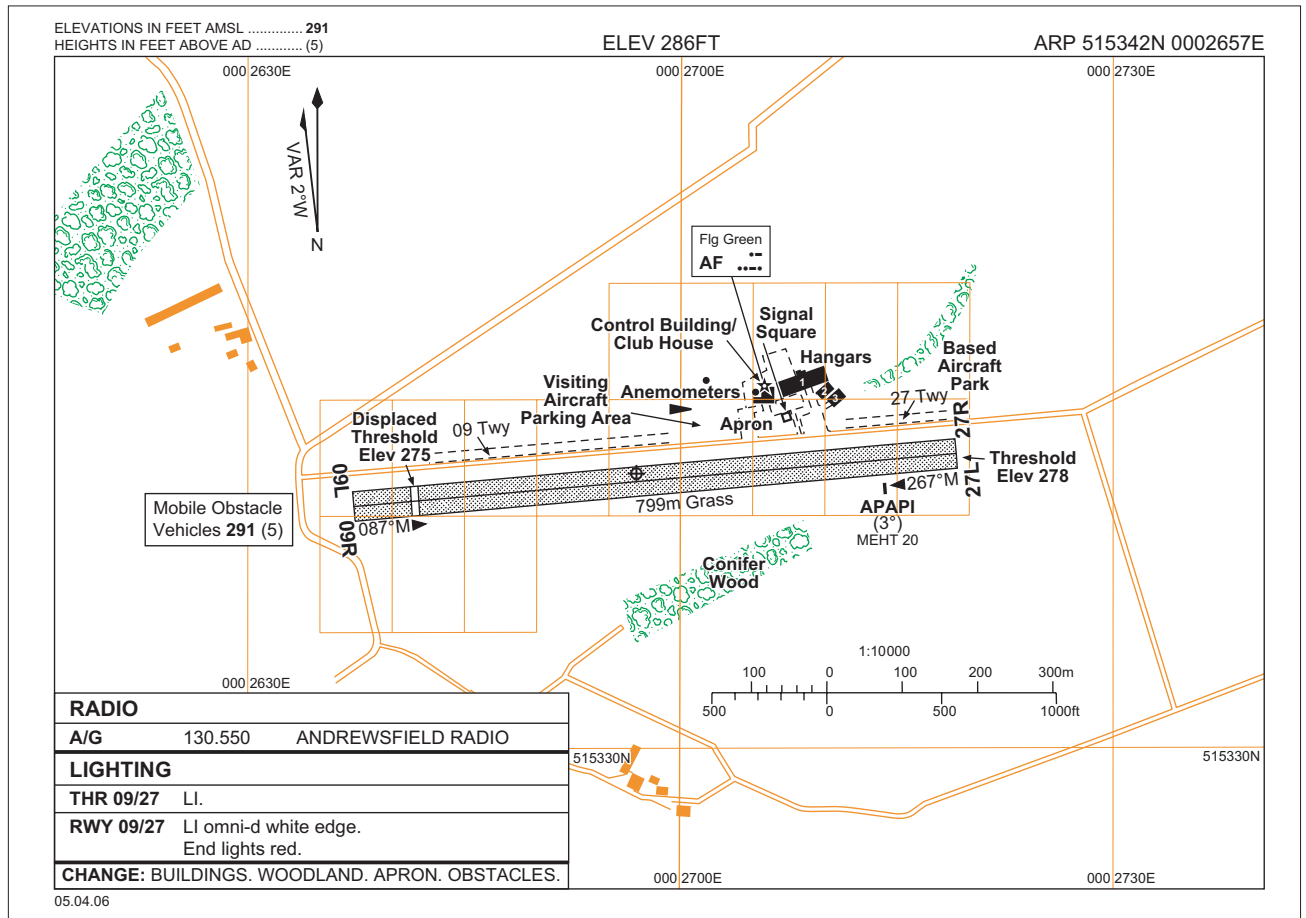


EGSL AD 2.1 **EGSL** **ANDREWSFIELD**



EGSL AD 2.2 – AERODROME GEOGRAPHICAL AND ADMINISTRATIVE DATA

2	Direction and distance from city:	4 nm WNW of Braintree.
4	Geoid undulation at AD ELEV PSN:	
5	Magnetic Variation/Annual Change:	W1.8° (2008) – 0.14° decreasing.
6	AD Administration:	Andrewsfield Aviation Ltd.
	Address:	Saling Aerodrome, Stebbing, Great Dunmow, Essex, CM6 3TH.
	Telephone:	01371-856744.
	Fax:	01371-856500.
7	Type of Traffic Permitted (IFR/VFR):	

EGSL AD 2.3 – OPERATIONAL HOURS

1	AD:	Winter: 0830-2100 and by arrangement. Summer: 0900-2000 and by arrangement.
2	Customs and Immigration:	By arrangement.
7	ATS:	As AD hours. See also AD 2.18.
8	Fuelling:	As AD hours.
12	Remarks:	This aerodrome is PPR by telephone only. See also AD 2.20.

EGSL AD 2.4 – HANDLING SERVICES AND FACILITIES

2	Fuel/oil types:	Fuel: AVGAS 100LL. Oil: W80.
3	Fuelling facilities/capacity:	

EGSL AD 2.6 – RESCUE AND FIRE FIGHTING SERVICES	
1 AD Category for fire fighting:	RFF Category Special.
3 Capability for removal of disabled aircraft:	

EGSL AD 2.10 – AERODROME OBSTACLES					
In Approach/Take-off areas			In circling area and at aerodrome		
1			2		
Runway/Area affected	Obstacle type Elevation Markings/lighting	Co-ordinates	Obstacle type Elevation Markings/lighting	Co-ordinates	
a	b	c	a	b	
		ft amsl			ft amsl
09/Approach 27/Take-off	Vehicles on road	291	*515340.00N 0002634.00E		
3 Remarks:					

EGSL AD 2.12 – RUNWAY PHYSICAL CHARACTERISTICS					
Designations RWY Number	True bearing	Dimensions of RWY (m)	Strength (PCN) and surface of RWY and stopway	THR co-ordinates RWY end co-ordinates THR Geoid undulation	THR elevation Highest elevation of TDZ of precision APP RWY
1	2	3	4	5	6
09L	085.11°	799	Grass	*515341.04N 0002641.40E - GUND	THR 275 ft
27R	265.12°	799	Grass	*515343.02N 0002718.84E - GUND	THR 278 ft
09R	085.11°	799	Grass	*515340.00N 0002641.00E - GUND	THR 275 ft
27L	265.12°	799	Grass	*515342.00N 0002719.00E - GUND	THR 278 ft
Slope of RWY/SWY	Stopway Dimensions (m)	Clearway Dimensions (m)	Strip Dimensions (m)	OFZ	
7	8	9	10	11	
12 Remarks: Two 18 m wide runways by day Single 36 m wide runway by night. Runway 09 threshold displaced by 79 m to provide 1:20 clearance over vehicles on road.					

EGSL AD 2.13 – DECLARED DISTANCES					
Runway Designator	TORA (m)	TODA (m)	ASDA (m)	LDA (m)	Remarks
1	2	3	4	5	6
09 27	799 799	799 799	799 799	720 799	

EGSL AD 2.17 – ATS AIRSPACE		
Designation and lateral limits	Vertical limits	Airspace Classification
1	2	3
Andrewsfield Aerodrome Traffic Zone (ATZ) Circle radius 2 nm centred on longest notified runway (09/27) 515342N 0002657E.	2000 ft aal SFC	D and G † (Note)
4 ATS unit callsign: Language:	Andrewsfield Radio. English.	
5 Transition Altitude:		
6 Remarks:	ATZ Hours: See AD 2.18. Note: Partly within London Stansted CTR, CTA 1 and CTA 3. † Refer to Section ENR 1.4 for Notifications.	

EGSL AD 2.18 – ATS COMMUNICATION FACILITIES					
Service Designation	Callsign	Frequency MHz	Hours of Operation		Remarks
			Winter	Summer	
1	2	3	4		5
A/G	Andrewsfield Radio	130.550	0830-2100 and by arrangement	0900-2000 and by arrangement	ATZ hours co-incident with A/G hours, but not by arrangement.

EGSL AD 2.20 – LOCAL TRAFFIC REGULATIONS	
1 Aerodrome Regulations	a Aerodrome is not available at night for public transport flights. Use at night by aircraft required to use a licensed aerodrome is confined to operations by Andrewsfield Aviation Ltd using RWY 27.
2 Warnings	a Aerodrome is located on the eastern edge of the Stansted CTR and below the Stansted CTA. See AD 2-EGSS 2.17. b Helicopter hovering operations take place south of Runway.

EGSL AD 2.21 – NOISE ABATEMENT PROCEDURES	
a	Noise abatement procedures in force. Obtain brief before departure.

EGSL AD 2.22 – FLIGHT PROCEDURES	
a	Circuit height 700 ft QFE, normal direction: Runway 09/27 - RH. Microlight circuits at 500 ft QFE inside the normal circuit pattern.
b	Andrewsfield Local Flying Area (LFA) and Procedures: <ul style="list-style-type: none"> i Part of the Andrewsfield ATZ (to the northwest of the Aerodrome) lies within the London Stansted CTR and the remainder lies partly within and partly beneath the London Stansted CTA. Subject to any listed restrictions, flights without reference to Stansted ATC may be made within the confines of the LFA. ii An LFA exists within the same lateral limits as the ATZ with a vertical limit of 1500 ft QNH. Aircraft shall remain clear of cloud, in sight of the surface and in a flight visibility of at least 3 km; iii Irrespective of whether they are in communication with Stansted ATC or not, aircraft that intend to penetrate the LFA during the hours of operation of the Andrewsfield A/G station, must not do so without first obtaining information from the Andrewsfield A/G station.

INTENTIONALLY BLANK